

# SEWING UP A STORM IN THE DESERT

## ULURU 2023

### WELCOME

THIS BOOKLET WILL GIVE DELEGATES IDEAS OF WHAT THERE IS TO EXPERIENCE AT ULURU AND WHAT WE WILL DO AT THE RETREAT. THE AYERS ROCK RESORT IS IN THE TOWNSHIP OF YULARA, WHICH IS LOCATED APPROX. 25KM FROM THE ULURU NATIONAL PARK AND 50KM FROM KATA TJUTA - THE OLGAS. THERE ARE MANY WAYS TO GET FROM THE RESORT TO VISIT THE NATIONAL PARK WITH BUS TOURS TO BOOK AND SEE THE MAJESTIC ULURU AND KATA TJUTA OR PLAN TO HIRE A CAR BEFORE YOU ARRIVE TO INDEPENDENTLY DRIVE YOURSELF AROUND. THE RESORT HAS A GET ON GET OFF SHUTTLE BUS SERVICE AROUND TOWN BETWEEN ALL RESORTS FOR COMPLIMENTARY USE TO EVERYONE VISITING YULARA.

LOOK LOOK LOOK  
BOOK BOOK BOOK  
LOOK LOOK LOOK  
BOOK BOOK BOOK



ULURU MAY BE REMOTE, BUT THAT DOESN'T MEAN IT'S DIFFICULT TO VISIT! THERE'S IS AN AIRPORT LOCATED ONLY 25KM FROM THE ICONIC ROCK, AIRLINES FLY STRAIGHT TO AYERS ROCK AIRPORT FROM MAJOR CITIES SO CHECK WITH YOUR PREFERRED AIRLINE THE FLIGHTS SCHEDULES...

[Textileretreats.com.au](http://Textileretreats.com.au)



---

TO GET FROM THE AIRPORT TO AYERS ROCK RESORT, THE COMPLIMENTARY COACH WILL MEET YOUR FLIGHTS. THE TRANSFER TAKES APPROX. 10 MINUTES AND TAKES YOU FROM THE AIRPORT TO YOUR HOTEL YOU HAVE BOOKED.

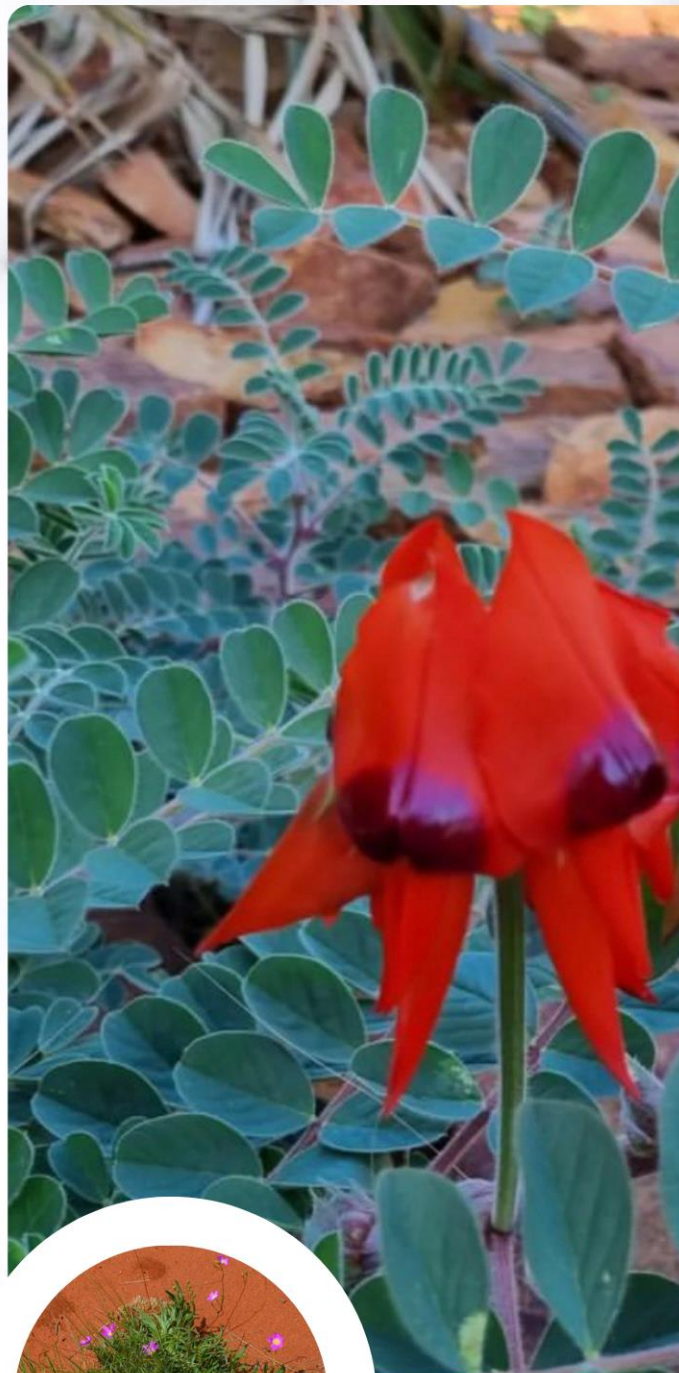
THERE ARE NO TAXIS, SO TAKING THE COMPLIMENTARY HOTEL COURTESY TRANSFER OR HIRING A CAR ARE YOUR ONLY OPTIONS FOR GETTING TO AND FROM THE AIRPORT.

THIS IS A REMOTE PART OF THE WORLD, WITHOUT QUESTION, BUT THAT DOESN'T MEAN THERE'S A LACK OF THINGS TO DO! IN FACT, THERE'S PLENTY FOR EVERYONE HERE AT AYERS ROCK RESORT. DURING YOUR TIME HERE, RIDE A CAMEL ACROSS THE DUNES, OR TAKE IN AN AERIAL VIEW OF ULURU-KATA TJUTA NATIONAL PARK ON ONE OF THE AIR ADVENTURES. IF YOU PREFER TO KEEP YOUR FEET FIRMLY ON THE GROUND, WHIZZ AROUND THE ROCK ON A BICYCLE, SEGWAY, OR ON THE BACK OF HARLEY DAVIDSON. THERE ARE ALSO GALLERIES TO BUY ART THAT REPRESENT THIS INTERESTING PART THE WORLD.

TO GAIN A DEEPER UNDERSTANDING OF THE HISTORY, CULTURE, AND GEOLOGY OF THIS REMARKABLE PLACE, YOU CAN JOIN ONE OF THE GUIDED TOURS. THE BENEFIT OF JOINING A SMALL GROUP TOUR IS THAT THEY'RE PERSONALISED. MEANING YOU'LL HAVE ACCESS TO AN EXPERT GUIDE WHO WILL TELL YOU ALL YOU NEED TO KNOW ABOUT ULURU.

NO VISIT TO ULURU IS COMPLETE WITHOUT TASTING SOME NATIVE BUSH TUCKER AT A BUSH FOOD EXPERIENCE, OR ENJOYING AN INTIMATE DINING EXPERIENCE TALI WIRU.

---





---

**SEWING UP A STORM IN THE DESERT  
AUG 5-8 2023  
ULURU TEXTILE ART RETREAT  
DELEGATES PACKAGE INCLUSIONS  
4 DAY MASTERCLASS WORKSHOP 5-6-7-8  
AUGUST 2023**

**THE DELEGATE PACK IS \$3980**

**DELEGATES RETREAT PACKAGES INCLUDES...  
EXCLUSIVE RETREAT WELCOME BAG AND GIFT  
4 DAY MASTERCLASS WORKSHOPS WITH THE  
TUTOR OF YOUR CHOICE IN THE  
STATE-OF-THE-ART 'ULURU MEETING PLACE'  
CONFERENCE CENTRE.  
GOURMET LUNCHES DURING 4 WORKSHOP  
DAYS.  
MORNING TEAS DURING 4 WORKSHOP DAYS.  
AFTERNOON TEAS DURING 4 WORKSHOP DAYS.  
AWARD WINNING SOUNDS OF SILENCE RETREAT  
DINNER UNDER THE STARS WITH INDIGENOUS  
ENTERTAINMENT, UNIQUE STAR TALK  
EXPERIENCE, ULURU & KATA TJUTA SUNSET BUS  
TOUR AND WINE TASTING.  
FIELD OF LIGHTS DESERT EXHIBITION STAR PASS  
WITH OUTBACK HAPPY HOUR AND STROLL  
AMONG THE STARLIGHTS ON THIS WORLD  
CLASS TOUR.  
RETURN AIRPORT-RESORT-AIRPORT SHUTTLE  
TRANSFERS.  
EXCLUSIVE BERNINA 325 SEWING MACHINE  
WITH UNIQUE ART SKIN VALUED \$1499**





DELEGATES ATTENDING THE RETREAT WILL NEED TO BOOK THE FOLLOWING TRAVEL DATES FOR FLIGHTS AND ACCOMMODATION TO ATTEND THIS RETREAT. THERE WILL BE A DISCOUNTED ACCOMMODATION RATE OFFERED DIRECTLY FROM THE AYERS ROCK RESORT TO DELEGATES WHEN QUOTING THIS EVENT, THIS CAN BE BOOKED THROUGH THE RESORT LINK ON THE WEBSITE

\*YOU WILL NEED TO BOOK YOUR OWN FLIGHTS TO AYERS ROCK AIRPORT ARRIVING ON FRIDAY 4 AUGUST AND DEPARTING AYERS ROCK RESORT YULARA WEDNESDAY 9TH AUGUST AFTER THE 4 DAY RETREAT UNLESS YOU STAY ON TO DO SOME EXTRA TOURING AROUND.

THE 4 DAY RETREAT WORKSHOPS WILL RUN SAT 5 - SUN 6 - MON 7 - TUE 8

YOU WILL BE WELCOMED AT THE ULURU MEETING PLACE WHERE YOU WILL ENJOY THE 4 DAYS OF SEWING IN THIS STUNNING CULTURAL CENTRE.

THE RETREAT OUTINGS

THE RETREAT TOURS THIS YEAR WE WILL BE THE SOUNDS OF SILENCE DESERT DINNER & DRINKS WITH INDIGENOUS ENTERTAINMENT AND STAR TALK WE WILL ALSO HAVE SUNSET PANORAMIC VIEWS OF ULURU AND KATA TJUTA WITH WINE AND CANAPÉ'S ACCOMPANYING THE SOUNDS OF THE ICONIC DIDGERIDOO.

THE STAR PASS FIELD OF LIGHTS TOUR DESERT HAPPY HOUR WITH WINE AND CANAPE'S OVERLOOKING ULURU FROM A SAND DUNE, THE WALKING ONTO THE DESERT FLOOR INTO THE STUNNING FIELD OF LIGHTS.

WE WOULD ENCOURAGE YOU TO WEAR LAYERS AS THE DAYS CAN GET VERY WARM AND AS THE SUN FADES IT CAN BE VERY COLD AT NIGHT. WEAR CLOSED SHOES FOR DESERT OUTINGS A WARM JACKET AND POSSIBLY A HAT OR BEANIE FOR EXTRA WARMTH.



AFTER WE HAVE OUR FRIDAY AFTERNOON REGISTRATION AND WELCOME IN THE ULURU MEETING PLACE WE WILL HAVE A CASUAL SAND DUNE SUNSET OPTIONAL GATHERING IN THE CENTRE OF TOWN, IT IS A SORT WALK UP ONTO A CENTRAL DUNE IN THE MIDDLE OF THE 'RING ROAD' THAT GIVES PANORAMIC VIEWS OF THE SURROUNDING LANDSCAPE AND IS A GREAT VANTAGE POINT WITHIN WALKING DISTANCE TO ALL ACCOMMODATIONS.

THIS WILL BE ANOTHER GREAT OPPORTUNITY FOR YOUR FIRST PHOTO SHOOT AT SUNSET AND A GATHERING TO MEET UP WITH OLD FRIENDS OR MAKE NEW ONES TO START OFF A WONDERFUL WEEK TOGETHER.

I ALWAYS MAKE A NOTE TO TELL DELEGATES THAT MIGHT LIKE A WINE IN THEIR ROOMS AT NIGHT TO BRING A BOTTLE OF WINE WITH THEM, THIS IS ALSO SOMETHING YOU CAN HAVE DURING THE OPTIONAL FRIDAY AFTERNOON SAND DUNE GATHERING... PLEASE NOTE THAT YOU DON'T HAVE TO BRING THIS AS YOU CAN BUY AT RESORT PRICES A BOTTLE OF WINE AND 6 PACK OF BEER AT THE OUTBACK PIONEER PUB ON PRESENTATION OF YOUR KEY (THERE ARE TIGHT CONDITIONS OF ALCOHOL SALE IN THE NT)





## THE RETREAT SCHEDULE

FRIDAY 4TH AUGUST 2023

ARRIVAL AT AYERS ROCK AIRPORT.

CATCH SUPPLIED AIRPORT SHUTTLE BUSES TO YOUR HOTEL DROP OFF.

SETTLE INTO YOUR ACCOMMODATION AND SURROUNDS.

TIME TBA FOR REGISTRATION AND CASUAL WELCOME TO COLLECT YOUR WELCOME BAG AND BECOME FAMILIAR WITH THE ULURU MEETING PLACE READY FOR SATURDAY.

YOUR HOTEL RECEPTION WILL GUIDE YOU TO THESE AREAS (PLEASE ASK THEM FOR A HANDY RESORT MAP AND HAVE THEM MARK THE SAILS IN THE DESERT CONFERENCE CENTRE THE ULURU MEETING PLACE FOR YOUR DIRECTIONS)

AFTER THE WELCOME WE WILL WALK OVER TO THE CENTRAL SAND DUNE TO VIEW SUNSET FROM THE RESORT. THIS IS AN OPTIONAL OUTING WITH THE TEAM, IT IS A SHORT WALK ALONG SANDY PATHS AND ONTO THE RED SAND DUNE WITHIN THE RESORT LANDSCAPE, CASUAL WARM LAYERS WITH JACKET, (IF YOU FEEL THE COLD A BEANIE, SCARF, GLOVES) AND CLOSED SHOES ARE ADVISED. YOU CAN ALSO BRING YOUR OWN REFRESHMENTS FOR THIS GATHERING IF YOU WISH. DINNER WILL BE AT YOUR OWN LEISURE AFTERWARDS.

DAY 1.

SAT 5TH AUGUST 2023

RETREAT STARTS!

9AM SHARP

WE WILL GATHER AT THE MEETING PLACE FOR AN OFFICAL WELCOME TO COUNTRY START FOR OUR 2023 RETREAT

ALL WORKSHOPS START AT 9.30AM

WORKSHOP FINISH TBA

OUR FIRST EXCITING NIGHT OUT TOGETHER

FIELD OF LIGHTS WITH OUTBACK HAPPY HOUR CANAPÉS STAR PASS TOUR TONIGHT TBA

DINNER WILL BE AT YOUR OWN LEISURE

DAY 2.

SUNDAY 6TH AUGUST 2023

WORKSHOPS WILL START AT 10AM

THIS MORNING IS AN OPPORTUNITY FOR A LATER START ITS A GREAT OPPORTUNITY TO HAVE A LOOK AROUND OR DO AN INDEPENDENT ULURU SUNRISE BUS TOUR WITH AAT KINGS OR HELICOPTER FLIGHT. PLEASE ARRANGE AND BOOK THIS WITH AYERS ROCK RESORT PRIOR TO COMING TO THE RETREAT AS BOOKINGS FILL QUICKLY.

WORKSHOP WILL FINISH AT 4PM

DAY 3.

MONDAY 7TH AUGUST 2023

WORKSHOPS START AT 9 AM

SOUNDS OF SILENCE DINNER UNDER THE STARS WITH INDIGENOUS DANCERS AND UNIQUE STAR TALK EXPERIENCE. SUNSET BUS TOUR WITH WINE TASTING TO SEE THE BREATH-TAKING SUNSET VIEWS OF KATA TJUTA AND ULURU.

BUS PICK UP TIME TBA

DAY 4.

TUESDAY 8TH AUGUST 2023

LAST RETREAT DAY

WORKSHOP STARTS 9AM

WORKSHOPS WILL FINISH AND PACK UP MACHINES AT 3PM

SHOW N TELL ALL WORKSHOP PROJECTS TOGETHER AND GROUP PHOTO OPPORTUNITY APPROX. 5PM

DINNER WILL BE AT YOUR OWN LEISURE

WEDNESDAY

IF YOU ARE LEAVING TODAY

YOU WILL CATCH THE AIRPORT SHUTTLE BUSES FROM YOUR INDIVIDUAL HOTEL FOYER TO AYERS ROCK AIRPORT AND DEPART ULURU. NOTIFY RECEPTION THE NIGHT BEFORE IF YOU NEED HELP WITH YOUR BAGS AND SEWING MACHINE BOX ON THE MORNING OF DEPARTURE ONTO THE AIRPORT BUS.

YOU WILL NEED TO TAKE YOUR OWN BERNINA SEWING MACHINE WITH YOU ON THIS BUS AND CHECK IT IN AS YOUR EXTRA CHECKED BAG WITH YOUR LUGGAGE AT THE AIRPORT. SOME PREVIOUS DELEGATES BROUGHT STRAPS, EXTRA WIDE ELECTRICAL TAPE AND ADDED HANDLES TO THEIR SEWING MACHINE BOX FOR EASIER MANOEUVRING DURING TRANSPORTING HOME.

THERE ARE SOME BAGGAGE TROLLEYS TO USE AT THE AIRPORT.

IF YOU ARE TRAVELING OUT BY ROAD YOU WILL STOW YOUR MACHINE AFTER CLASS IN YOUR VEHICLE READY FOR YOUR TRIP HOME.



# OUR RETREAT OUTINGS

THIS WORLD-RENOWNED DINING EXPERIENCE IS INCLUDED IN THE AUSTRALIAN TOURISM HALL OF FAME, SOUNDS OF SILENCE OFFERS THE BEST OF THE RED CENTRE DISTILLED INTO FOUR MAGICAL HOURS. AN EVENING OF DINING UNDER THE SPARKLING OUTBACK SKY.

YOUR SOUNDS OF SILENCE EXPERIENCE BEGINS WITH CANAPÉS AND CHILLED SPARKLING WINE SERVED ON A VIEWING PLATFORM OVERLOOKING THE ULURU-KATA TJUTA NATIONAL PARK. AS THE SUN SETS AND DARKNESS FALLS, LISTEN TO THE SOUND OF A DIDGERIDOO AND JOIN YOUR TABLE OF FELLOW TRAVELLERS FOR AN UNFORGETTABLE DINING EXPERIENCE.

THE ATTENTIVE STAFF WILL KEEP YOUR GLASS FULL OF A QUALITY SELECTION OF AUSTRALIAN WINE AND BEER WHILE YOUR FIRST COURSE IS SERVED.

YOU WILL BE AWE STRUCK BY THE INDIGENOUS DANCERS AS THEY APPEAR FROM THE DARKNESS TO BRING THE DREAMTIME TO LIFE IN THIS MAGICAL DESERT PLACE.

AS THE NIGHT SKY TWINKLES TO LIFE, HELP YOURSELF TO A BUSH TUCKER INSPIRED BUFFET THAT INCORPORATES TASTY NATIVE BUSH INGREDIENTS AND GOURMET DISHES FINISHED WITH DELICIOUS DESSERTS.

SETTLE BACK AND LISTEN TO THE RESIDENT STAR TALKER DECODE THE SOUTHERN NIGHT SKY. LOCATE THE SOUTHERN CROSS, THE SIGNS OF THE ZODIAC, THE MILKY WAY, AS WELL AS PLANETS AND GALAXIES THAT ARE VISIBLE DUE TO THE EXCEPTIONAL CLARITY OF THE ATMOSPHERE.

“THIS IS AN EXCEPTIONAL EXPERIENCE TO SHARE TOGETHER”

## SOUNDS OF SILENCE DINNER





## FIELD OF LIGHTS STAR PASS

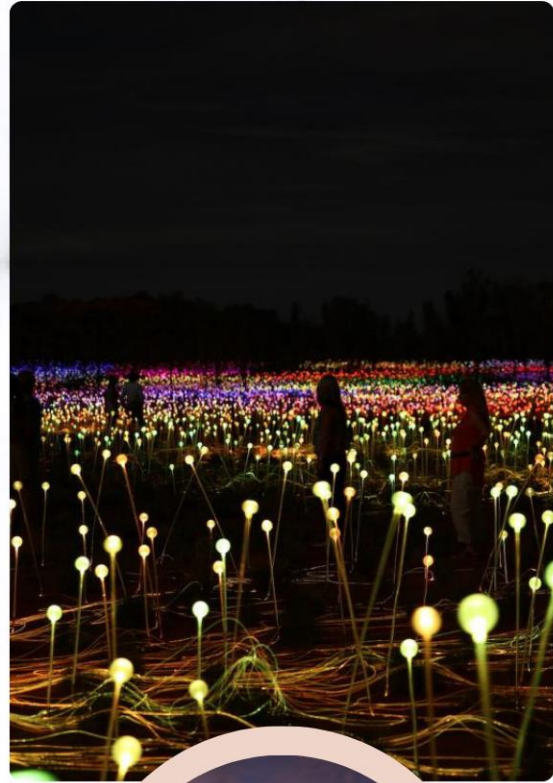
STROLL AMONG THE STARS IN THE FIELD OF LIGHTS! THE EXPERIENCE BEGINS WITH A COACH PICK-UP AND SHORT TRANSFER TO THE REMOTE DESERT LOCATION WITH MAJESTIC VIEWS OF ULURU.

YOU'RE WELCOMED AT AN EXCLUSIVE DUNE TOP JUST AFTER THE SUN HAS SET ON THE HORIZON. SAVOUR A SELECTION OF OUTBACK CANAPES WITH SPARKLING WINE OR BEER AS YOUR HOST PROVIDES INSIGHT INTO THE LIGHT INSTALLATION THAT AWAITS YOU. AS DARKNESS FALLS, 50,000 GLASS SPHERES GENTLY COME TO LIFE. COVERED UNDER A SKY BRILLIANT WITH STARS, FIELD OF LIGHT BECKONS YOU TO EXPLORE AND LOSE YOURSELF MOMENTARILY IN THE RHYTHMS OF COLOURED LIGHT.

TOUR DURATION APPROX. 2.5 HOURS INCLUDING TRANSFERS

### STAR PASS INCLUDES:

- ENTRANCE TO FIELD OF LIGHT EXHIBITION
- INTRODUCTION BY A HOST
- OUTBACK STYLE CANAPES
- AUSTRALIAN SPARKLING WINE, BEER AND NON-ALCOHOLIC BEVERAGES
- SELF-GUIDED WALK THROUGH THE ILLUMINATED FIELD OF LIGHT
- PANORAMIC VIEW OF FIELD OF LIGHT FROM THE EXCLUSIVE DUNE TOP AREA
- RETURN COACH TRANSFERS TO THE REMOTE SITE FROM ALL HOTELS





## GOOD THINGS COME IN SMALL PACKAGES

WE ARE VERY PLEASED TO ANNOUNCE THAT BERNINA AUSTRALIA WILL AGAIN BE THE MAJOR SPONSOR OF THE 2023 ULURU RETREAT AND THE NEW UNIQUELY SKINNED 325 BERNINA MACHINES THAT WILL BE INCLUDED IN THE SEWING CLASSES AS A BONUS PRICED PACKAGE AND WAITING FOR YOU TO 'SEW UP A STORM' AND THEN YOU TAKE YOUR NEW MACHINE HOME WITH YOU AFTER THE EVENT.



THE NIGHT SKY AND MAGNITUDE OF STARS SEEN FROM A DESERT LANDSCAPE JUST BLOWS YOUR MIND! THE SOUTHERN HEMISPHERE OFFERS SOME SPECTACULAR SKY"

A STAR TALK 'ON COUNTRY' BY ABORIGINAL ELDERS IS A MUST! BOTH RETREAT AND BERNINA TEAMS LOOK FORWARD TO SHARING THIS MAGICAL SKY BOTH NIGHT AND DAY, SUNSET AND SUNRISE WHILE YOU ARE AT ULURU WITH US AT THIS YEAR'S RETREAT...AND FOR YOU TO TAKE HOME YOUR SPECIALLY SKINNED MACHINE WITH CAROLINE'S ARTWORK DESIGN FOR 2023

THE BERNINA 325 MACHINE IS FULL OF THE LATEST TECHNOLOGY. IT'S PERFECTLY SIZED FOR SMALL SEWING ROOMS AND YET IT HAS A LOT UNDER THE HOOD.

QUALITY FROM TOP TO BOBBIN IT'S HARD TO IMPROVE ON AWESOME, BUT BERNINA FOUND A WAY!

IT IS ROBUST WITH DURABLE QUALITY, ENSURING THAT NOTHING STANDS IN THE WAY OF YOUR CREATIVITY. ON THE OUTSIDE, THE SIMPLE, USER-FRIENDLY OPERATION MAKES LIFE EASY.

A BRIGHT MODERN LCD SCREEN PROVIDES AN OVERVIEW OF THE FUNCTION SETTINGS AT ALL TIMES. THE MOST FREQUENTLY USED FUNCTIONS ARE EASILY ACCESSIBLE RIGHT UP FRONT, FOR EXAMPLE THE START/STOP BUTTON FOR SEWING WITHOUT THE FOOT CONTROL OR THE REVERSE SEWING BUTTON. THE POSITION OF THE NEEDLE WHEN YOU STOP SEWING IS SET USING THE NEEDLE STOP UP/DOWN BUTTON – INCREDIBLY HELPFUL WHEN SEWING CORNERS OR DOING APPLIQUE ESPECIALLY NOW THAT IT HAS A BEAUTIFUL BLANKET STITCH BUILT IN. THE PATTERN END FEATURE IS USEFUL WHEN SEWING DECORATIVE STITCHES AND THE SLIDE SPEED CONTROL ALLOWS YOU TO SET THE SPEED YOU WANT, UP TO 900 STITCHES PER MINUTE.

THIS 'STAR TALK' QUILT BY CAROLINE SHARKEY IS THE DESIGN INSPIRATION FOR THIS YEAR'S EXCLUSIVE BERNINA 325 MACHINE SKIN. CAROLINE WON FIRST PRIZE IN THE BERNINA BEST OF SOUTHERN STARS SPECIAL THEMED CATEGORY AWARD AT THE SYDNEY QUILT SHOW 2018.... CAROLINE'S PRIZE WAS A SPECIALLY SKINNED 215 BERNINA MACHINE WHICH SPARKED THE IDEA FOR THIS YEAR'S ULURU SKIN.

**BERNINA**  
*made to create*



# 2023 TUTORS

## CAROLINE SHARKEY

A DESERT LANDSCAPE" 4 -DAY  
WORKSHOP

THE PATTERNS, TEXTURES AND COLOURS  
OF THIS LANDSCAPE IS STUNNING.  
THE VASTNESS, THE CULTURAL FEELING  
AND THE UNIQUE ISOLATION ALL COMES  
TOGETHER AS AN EXPERIENCE OF A LIFE  
TIME. IN THIS WORKSHOP WITH CAROLINE  
YOU WILL CREATE NEW FABRIC  
SURFACES, DESIGN FROM YOUR  
INSPIRATIONAL DRAWINGS OR PHOTOS  
AND CREATE A LASTING PICTORIAL OR  
ABSTRACT MEMORY OF YOUR TIME HERE  
IN THE RED CENTRE AT ULURU.



4 DAY MASTERCLASS





---

## PAM HOLLAND

RANDOM PRECISION REWORKED IN THIS FABULOUS 4-DAY MASTERCLASS RETREAT DELEGATES WILL WORK TO CONSTRUCT FROM INSPIRATION WE FIND IN THE RED CENTRE TO CREATE INTERESTING PIECES USING NON PERFECT TEXTILES, HAND DRAWN ILLUSTRATIONS, PHOTOS AND RUBBINGS FROM THE SURROUNDING AREA. THERE IS A PRECISION TO THIS PIECE DESPITE THE FACT THAT ITS MADE FROM MANY PIECES AND REWORKING IT LENDS ITSELF TO EXTENSIVE SURFACE PLAY BOTH MACHINE DRAWING AND SLOW STITCH MARKINGS. THE TIME SPENT CREATING, DESIGNING AND CONSTRUCTING BETWEEN TECHNIQUES AND THE ART CATEGORIES WILL HELP PUSH THE LIMITS OF YOUR EXPERIENCE. THIS EXCITING MASTERCLASS IS THE CLASS FOR ANYONE READY TO STEP INTO THE WONDERFUL WORLD OF PAM HOLLAND TEXTILE ART. PAM IS A WORLD CLASS TEXTILE ARTIST, PHOTOGRAPHER, TUTOR, ILLUSTRATOR AND AUTHOR



### 4 DAY MASTERCLASS





---

## GLORIA LOUGHMAN

THE QUILT WE WILL BE MAKING FEATURES A BEAUTIFUL ABSTRACT SKY FULL OF MOVEMENT AND DIRECTION. THE SKY IS PIECED FROM HAND PAINTED FABRIC THAT WILL BE PROVIDED AS PART OF THE KIT FOR THIS CLASS. THE QUILT WILL INCLUDE MAGNIFICENT ULURU IN ALL ITS MAJESTY AND A FOREGROUND FEATURING MACHINE EMBROIDERY, REPLICATING THE FIELD OF LIGHTS.

I AM CO-AUTHOR OF MY LATEST BOOK WITH TONY MY HUSBAND. IT FEATURES MY ART QUILTS AND TONY'S PHOTOGRAPHY OF MANY PLACES IN THE WORLD BUT ULURU IS A FAVOURITE PLACE FOR US.



### 4 DAY MASTERCLASS



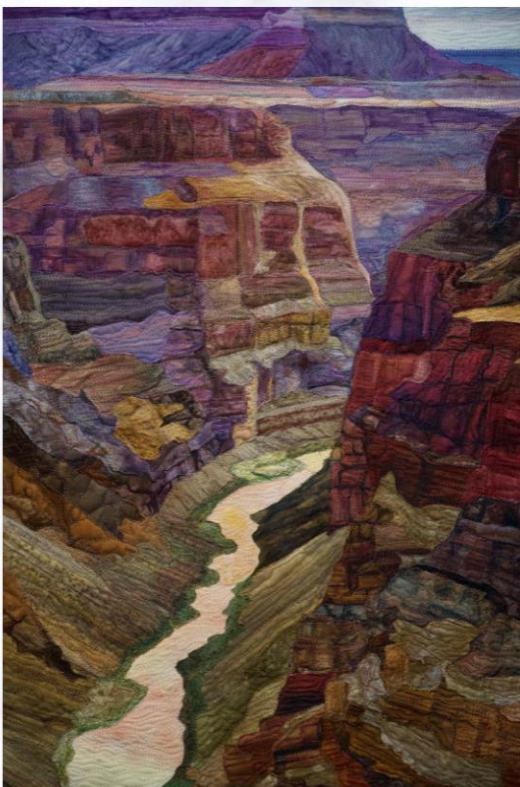


---

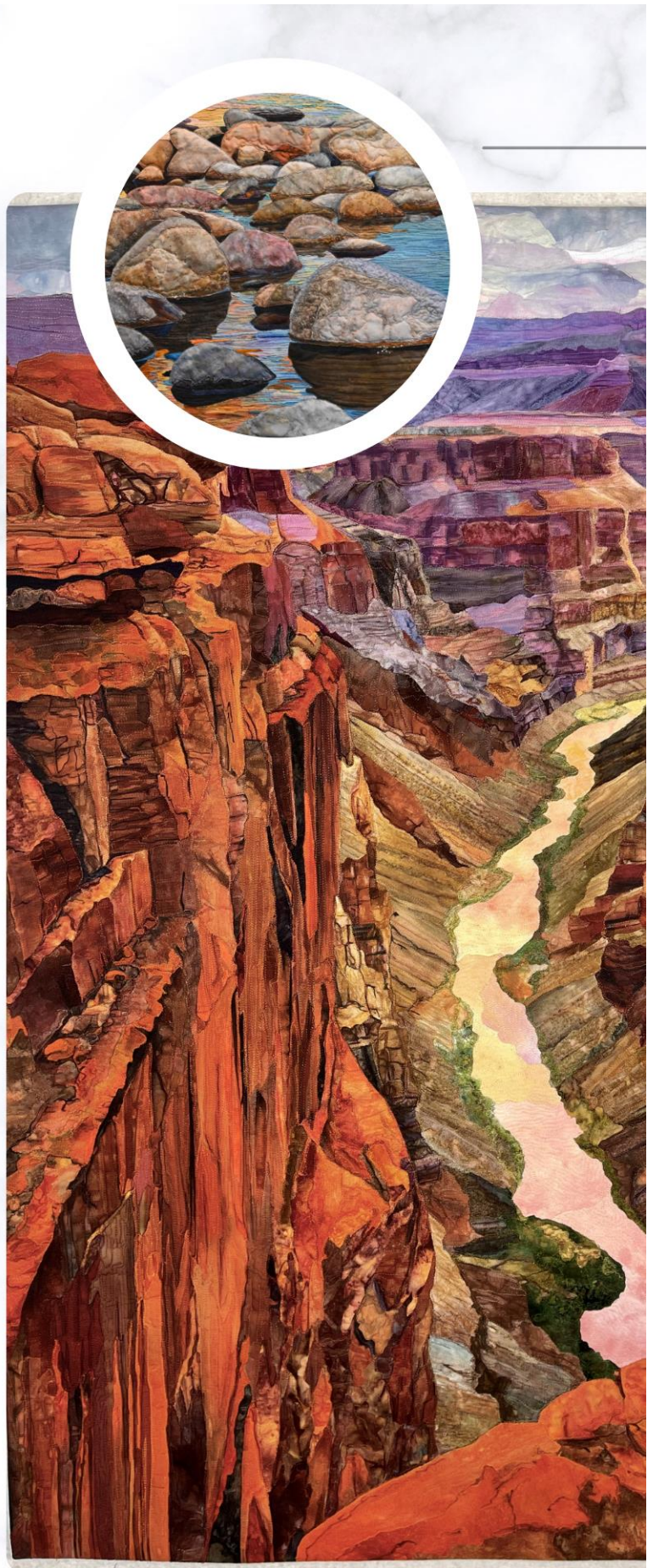
## SANDRA MOLLON

FUSED ART LANDSCAPES FROM  
PHOTOGRAPHS

REPRESENTATIONAL LANDSCAPES HAVE ALWAYS BEEN A FAVOURITE ART GENRE WORLDWIDE, AND TEXTILE LANDSCAPE ART IS NO EXCEPTION. IN MY LANDSCAPE WORKSHOP STUDENTS SELECT AN APPROPRIATE PHOTO, GET IT ENLARGED AND MAKE A TRACING, CHOOSE THE APPROPRIATE FABRICS, FUSE INTO PLACE, AND LEARN TO USE MIXED MEDIA, THREAD PAINTING AND QUILTING TO ENHANCE THEIR WORK FOR ADDED TEXTURE AND REALISM.



**4 DAY MASTERCLASS**





---

## JUDY COATES PEREZ

INK, PRINT, REPEAT, WE'LL MAKE FIBER-FRIENDLY ACRYLIC INKS, AS A MORE ENVIRONMENTALLY CONSCIOUS ALTERNATIVE TO FIBER REACTIVE DYES. WE'LL CREATE VISUAL TEXTURE BY APPLYING INKS WITH DIFFERENT BRUSHSTROKES, SPONGES, ALTERING INK AND WATER RATIOS, ADDING SALT, MONO-PRINTING, SCRUNCHING, STITCHING, CLAMPING AND PLEATING WITH A VARIETY OF SHIBORI TECHNIQUES. THEN WE'LL EXPLORE PATTERN DESIGN BY MAKING STAMPS, AND PRINTING ON OUR COLOURFUL FABRIC WITH FOAM, RUBBER AND WOOD STAMPS, AS WELL AS THERMOFAX SCREENS. STITCHING INTO OUR SURFACES TO ENHANCE OUR FABRIC DESIGNS...THE POSSIBILITIES ARE ENDLESS.



### 4 DAY MASTERCLASS





# TRAVEL TO ULURU

JUST TO RECAP ON TRAVELING TO ULURU FOR THE RETREAT...

FLYING INTO AYERS ROCK AIRPORT IS EASY AND YOU CAN CHECK WITH AIRLINES FOR FLIGHTS. FOR THE RETREAT YOU WILL NEED TO ARRIVE ON THE MIDDAY FLIGHT FRIDAY 4 AUGUST ONCE ON THE GROUND YOU WILL COLLECT YOUR BAGS AND THEN CATCH THE COMPLIMENTARY COACHES FOR DROP OFF TO ALL THE AYERS ROCK RESORT ACCOMMODATION RECEPTION AREAS FOR YOUR CHECK IN.

ALL DELEGATES WILL NEED TO ORGANIZE AND BE RESPONSIBLE FOR ALL THEIR OWN TRAVEL PLANS, IF FLYING IN PLEASE BOOK EXTRA RETURN BAGGAGE FOR THE RETURN OF YOUR MACHINE. THE MACHINES WILL BE PACKED BACK INTO THE MANUFACTURES BOX AND THEY CAN BE CHECKED THROUGH AS AN EXTRA BAG THIS HAS BEEN VERY SUCCESSFUL EACH YEAR.

PREVIOUS DELEGATES HAVE BROUGHT STRAPS TO WRAP AROUND THE MACHINE BOX TO HELP MANOEUVRE THE BOXES DURING TRANSIT HOME YOU WILL BE RESPONSIBLE TO ORGANISE YOUR OWN TRAVEL INSURANCE AND BOOK YOUR OWN ACCOMMODATION FOR THIS RETREAT AT AYERS ROCK RESORT....SOME OF YOU MIGHT LIKE TO STAY LONGER AND TOUR AFTER THE RETREAT THAT WOULD BE AN OPTION THAT YOU CAN PLAN INDIVIDUALLY.

WE REALIZE IT IS A LONG WAY OFF BUT AS AYERS ROCK IS AN ISOLATED PLACE AND BOOKINGS NEED TO BE SECURED AS SOON AS POSSIBLE.



IF DRIVING INTO AYERS ROCK WITH A CARAVAN OR CAMPERVAN YOU WILL NEED TO BOOK INTO THE CAMPGROUND AT YULARA OR YOU COULD STILL USE THE RESORT BOOKING FORM TO BOOK INTO ANY OF THE OTHER RESORT ACCOMMODATION AND PARK YOUR RIG IN THE CAMPER CAR PARKS.



## TRANSPORT AT ULURU

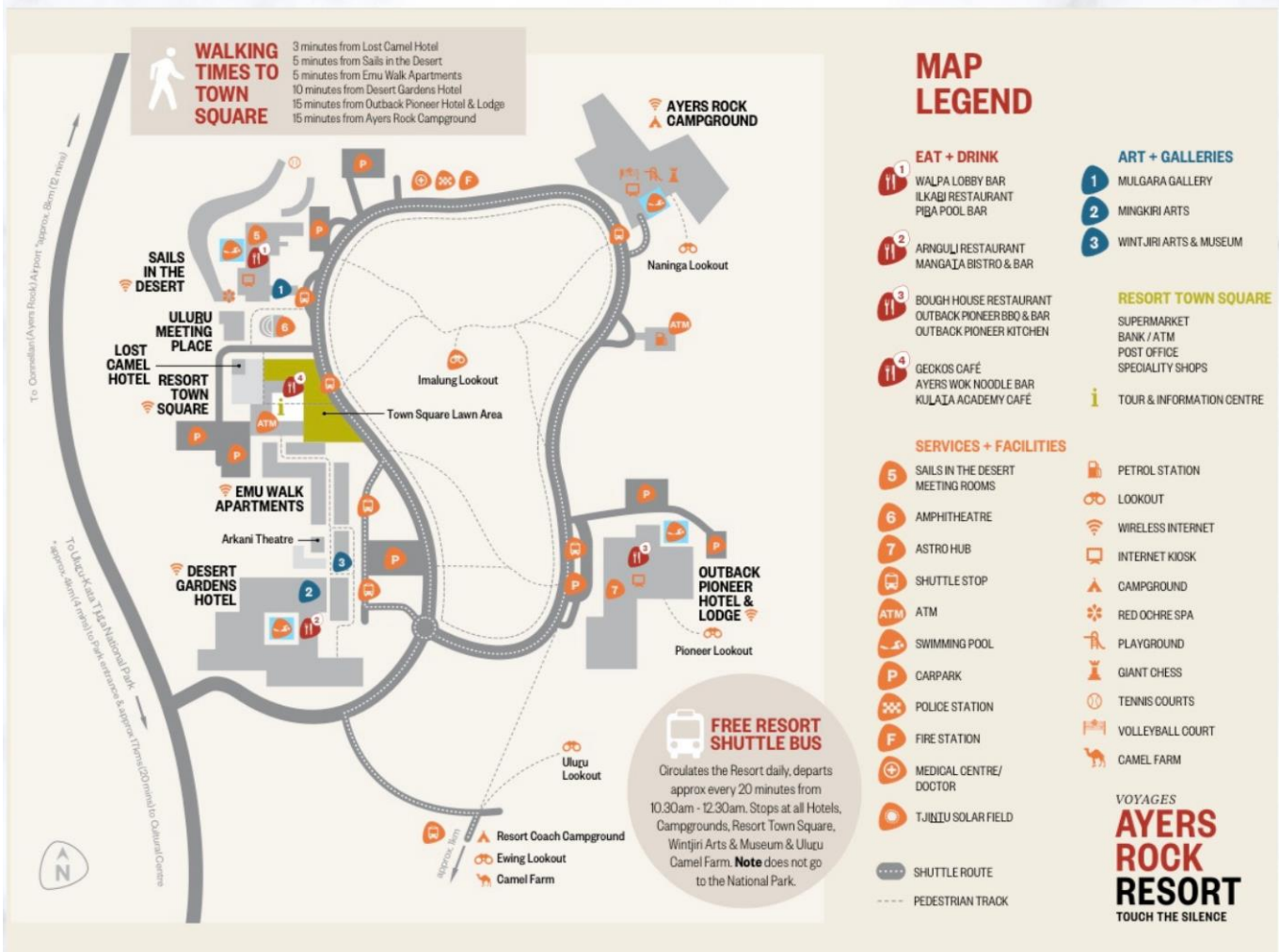
### THE RESORT SHUTTLE BUS

THE YULARA SHUTTLE BUS GOES ALL DAY AROUND THE RING ROAD TO EACH RESORT AND IS COMPLIMENTARY TO ALL VISITORS AND LOCALS.

CAR HIRE OPTION- IT IS HIGHLY RECOMMENDED IF YOU WANT TO HIRE A VEHICLE THAT YOU BOOK THE HIRE BEFORE ARRIVING AND ALL CAR PICK AND DROP OFF ARE AT THE AIRPORT.

THE ULURU SHUTTLE IS A TOUR BUS THAT DROPS VISITORS OUT AT THE ROCK THIS CAN BE BOOKED AT YOUR HOTEL RECEPTIONS.

APPT KINGS BUS TOURS RUN SEVERAL TOURS PER DAY WITH LOTS OF DIFFERENT TOURS YOU CAN BOOK AT YOUR HOTEL RECEPTIONS.





## THE ULURU MEETING PLACE

THE ULURU RETREAT WILL BE HELD IN THE STATE-OF-THE-ART CONFERENCE CENTRE WITH MAIN CONFERENCE ROOMS AND WELCOME FOYER CALLED "THE ULURU MEETING PLACE" WILL BE THE 'RETREAT SEWING HUB' FOR THE 2023 RETREAT.

THE CLOSEST AYERS ROCK RESORT HOTEL TO THE CONFERENCE ROOM IS THE AWARD WINNING 'SAIL IN THE DESERT RESORT' AND IS A SHORT STROLL ACROSS THE LAWN FROM THIS HOTEL RECEPTION AREA.



### THE TOWN CENTRE

THE TOWNSHIP AT AYERS ROCK RESORT IS CALLED YULARA. IT IS A RESORT TOWN WITH VARIOUS DIFFERENT ACCOMMODATION CHOICES... SAILS IN THE DESERT, DESERT GARDENS (PLEASE MAKE A NOTE IF BOOKING HERE ASK FOR A ROOM UP CLOSER TOWARDS THE RECEPTION AREA AS IT'S CAN BE QUITE A WALK THROUGH THIS HOTEL), EMU WALK APARTMENTS, THE LOST CAMEL, THE OUTBACK PIONEER HOTEL AND THE CAMP GROUND. THE PETROL STATION, FIRE, POLICE AND AMBULANCE STATION ARE SITUATED AROUND THE RING ROAD IN YULARA AND THE FREE GET ON GET OFF RESORT SHUTTLE SERVICE GOES AROUND THIS RING ROAD ALL DAY EVERY DAY SO THAT VISITORS AND STAFF CAN GET AROUND THE TOWNSHIP.

EVERY DAY IN THE TOWN CENTRE THERE WILL BE ACTIVITIES TO ENJOY, SEE INDIGENOUS DANCERS, THE ARTWORK MARKETS, THE RESORT RUNS GARDEN TALKS, OR DO A DOT PAINTING CLASS.

YOU CAN SHOP IN EACH RESORT SHOP FOR BEAUTIFUL SOUVENIRS AND GIFTS AND VISIT THE WORLD CLASS MULGARA GALLERY IN SAILS IN THE DESERT HOTEL FOR STUNNING ARTWORKS BY ARTISTS FROM MANY DESERT REGIONS.

DELEGATES WILL BE ABLE TO EAT AT THE MANY RESTAURANTS THROUGHOUT THE RESORT ALL LOCATED IN YULARA - DINNER BOOKINGS ARE ADVISED WHICH CAN BE MADE THROUGH YOUR HOTEL RECEPTIONS.

AN IGA SUPERMARKET IS LOCATED IN THE TOWN CENTER AND HAS ALL OPTIONS FOR SELF CATERING.



## YULARA TOWN CENTRE SHOPPING

YULARA TOWN CENTRE HAS AN IGA SUPERMARKET, BANK WITH ATM, POST OFFICE, NEWSAGENCY, GIFT SHOPS, INFORMATION CENTRE, COFFEE SHOP AND RESTAURANTS. WALKING AREAS AROUND THE TOWN CENTRE AND RESORTS IS PATHED AND FLAT WITH DISABLE ACCESS IN MOST AREAS. ALL RESORTS FRONTAGE IS DIRECTLY ONTO THE 'RING ROAD' THAT CIRCLES THE WHOLE TOWN. CAR PARKING IS ALSO CLOSE TO MOST ACCOMMODATION AND ALL TOURIST ROADS ARE SEALED.





# THE RESORT



## SAILS IN THE DESERT RESORT

SAILS IS A WORLD CLASS RESORT IN THE DESERT. AS SOON AS YOU WALK INTO THIS STUNNING FOYER YOU ARE IMMERSSED INTO A CULTURAL EXPERIENCE. MULGARA GALLERY IS IN THE FRONT FOYER OF THIS RESORT AND THE RECEPTION AREA IS ON THE LOWER LEVEL FOYER. THE RESTAURANTS ARE 5 STAR AND THE POOL AND BAR AREA ARE AN OASIS IN THE DESERT.



## DESERT GARDENS HOTEL

THE NEWLY RENOVATED 4.5-STAR DESERT GARDENS HOTEL OFFERS 218 ELEGANT GUESTROOMS WITHIN AN OASIS OF NATIVE GARDENS.

ACCOMMODATION OPTIONS ARE DIVERSE FROM DELUXE ROCK VIEW ROOMS TO SHADY POOLSIDE ROOMS ALL LOCATED UNDER A CANOPY OF TOWERING GUM TREES AND GARDEN BEDS DOTTED WITH NATIVE SHRUBS AND FLOWERS.

MANGATA BISTRO & BAR SERVES A DELICIOUS BUFFET BREAKFAST AND, FOR LUNCH AND DINNER, A DIVERSE RANGE OF LIGHT MEALS SHOWCASING THE FINEST AUSTRALIAN PRODUCE WITH HIGHLIGHTS OF NATIVE AUSTRALIAN BUSH TUCKER FLAVOURS THROUGHOUT. THIS VENUE COVERS A LOT OF AREA AND IN THE PAST, WE HAVE REALIZED THAT SOME ROOMS ARE NOT ALWAYS CONVENIENT FOR OUR DELEGATES AND THEIR VISITORS SO PLEASE MENTION THESE SUGGESTIONS IF THEY APPLY TO YOU.





## EMU WALK APARTMENTS

EMU WALK APARTMENTS OFFERS 1 AND 2 BEDROOM SELFCONTAINED APARTMENTS MAKING IT THE PERFECT CHOICE FOR FAMILIES OR COUPLES AND FRIENDS TRAVELLING TOGETHER.

INDIGENOUS DESIGN ELEMENTS ARE SHOWCASED THROUGHOUT THE WELL-EQUIPPED SEPARATE KITCHEN/LAUNDRY, LIVING AND BEDROOM INTERIORS. LUXURIOUS BEDROOMS ENSURE RESTFUL NIGHTS AFTER LONG DAYS EXPLORING ULURU AND KATA TJUTA. MULTIPLE BED LAYOUTS ARE AVAILABLE WITH EACH BEDROOM LAYOUTS. GREAT FOR SELF-CATERING AS WELL. THE APARTMENTS ARE JUST MINUTES' WALK TO THE ULURU MEETING PLACE, SUPERMARKET, SHOPS, CAFES AND THE TOUR & INFORMATION CENTRE. THE REMAINDER OF AYERS ROCK RESORTS FACILITIES ARE WITHIN A SHORT WALK OR COMPLIMENTARY SHUTTLE BUS RIDE.





## ULURU - KATA TJUTA NATIONAL PARK

EVERYONE PASSING THROUGH INTO THE ULURU NATIONAL PARK WILL NEED A PARK PASS TO BE PRESENTED AT THE GATE WHEN DRIVING THROUGH. OUR RETREAT EVENT OUTINGS WE WILL GO ON WILL NOT NEED THIS TICKET.

IF YOU WISH TO GO TO ANY OTHER TOURS OR DRIVES INTO SEE THE PARK YOU WILL NEED TO PURCHASE YOUR OWN TICKET INDIVIDUALLY EITHER AT THE GATE OR WITH A TOUR COMPANY. YOU CAN BOOK TOURS THROUGH THE AYERS ROCK RESORT TRAVEL CENTRE BEFORE YOU ARRIVE OR AT YOUR ACCOMMODATION RECEPTION WHEN YOU ARE THERE. YOU CAN VISIT THE NATIONAL PARK ON BUS TOURS DAILY WITH AAT KINGS DO A SUNRISE OR A SUNSET OUTBACK BBQ ONE NIGHT JUST TO NAME A FEW. THE ULURU SHUTTLE SERVICE IS LIKE A TAXI SERVICE THAT CAN DROP YOU AT THE BASE OF ULURU TO WANDER AROUND AND SHOP AT THE NATIONAL PARK GALLERY AND STORE OR DO THE 9.4KM BASE WALK AROUND ULURU AND LATER BE PICKED UP AGAIN, ALTERNATELY YOU COULD DROP OFF AT KATA TJUTA (THE OLGA'S) THE 36 GIANT DOMES AND WANDER AROUND IN THE WALPA GORGE FOR A MAGICAL EXPERIENCE.

ULURU IS APPROX. 25KM AND KATA TJUTA 57KM FROM YULARA TOWN CENTRE.





# THE CULTURAL CENTER

BASED AT ULURU, MARUKU@ULURU PROVIDES AUTHENTIC ANANGU CULTURAL EXPERIENCES FOR INDIVIDUALS, GROUPS AND CHARTERS ON PUBLIC AND PRIVATE TOURS.

CELEBRATING AND COMBINING STORIES OF PEOPLE AND PLACES.

WITH A GALLERY AT THE CULTURAL CENTRE IN ULURU-KATA TJUTA NATIONAL PARK AND MULTIPLE LOCATIONS FOR TOURS, OFFERS AN OVERALL UNDERSTANDING OF LOCAL ABORIGINAL CULTURE THROUGH QUALITY ART & CRAFT. IT IS THE PERFECT OPPORTUNITY TO MEET, UNDERSTAND THE CULTURE AND PURCHASE WORKS FROM LOCAL ARTISTS, KNOWING THAT ALL FUNDS ARE RETURNED TO THE ANANGU PEOPLE.

MARUKU ARTS - TRADING AS MARUKU@ULURU - IS A NOT-FOR-PROFIT ART & CRAFT CORPORATION 100% OWNED AND CONTROLLED BY ANANGU FOR OVER 35 YEARS. INITIALLY FOUNDED BY ANANGU IN RESPONSE TO A GROWING NEED FOR EFFECTIVE CO-ORDINATION OF MARKETING AND SUPPORT SERVICES TO ABORIGINAL CRAFTSPEOPLE LIVING WITHIN THE CENTRAL DESERT LANDS. THIS PROVIDES A SERVICE TO SOME 900 CRAFTSPEOPLE LIVING IN COMMUNITIES AND HOMELANDS. ITEMS ARE SOLD THROUGH THE MARUKU RETAIL GALLERY, OUR ONLINE STORE AND WHOLESALE TO SHOPS & GALLERIES THROUGHOUT THE WORLD AND THROUGH PRESTIGE EXHIBITIONS.





# THE RETREAT

THE FUN!  
THE MEMORIES!  
THE ADVENTURE!  
IT ALL HAPPENS AT  
SEWING UP A STORM  
IN THE DESERT RETREAT!



*Join Us!*

